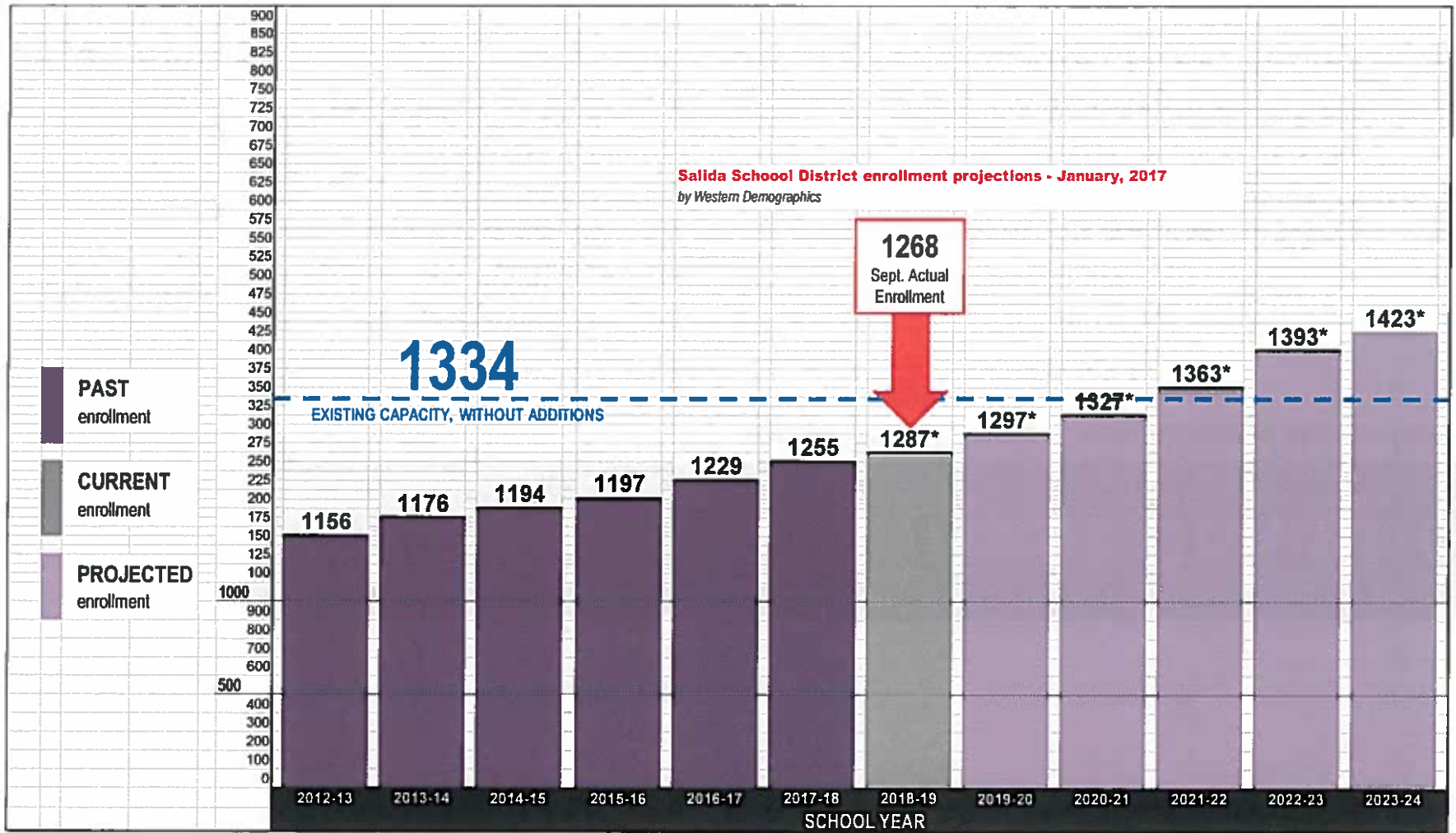


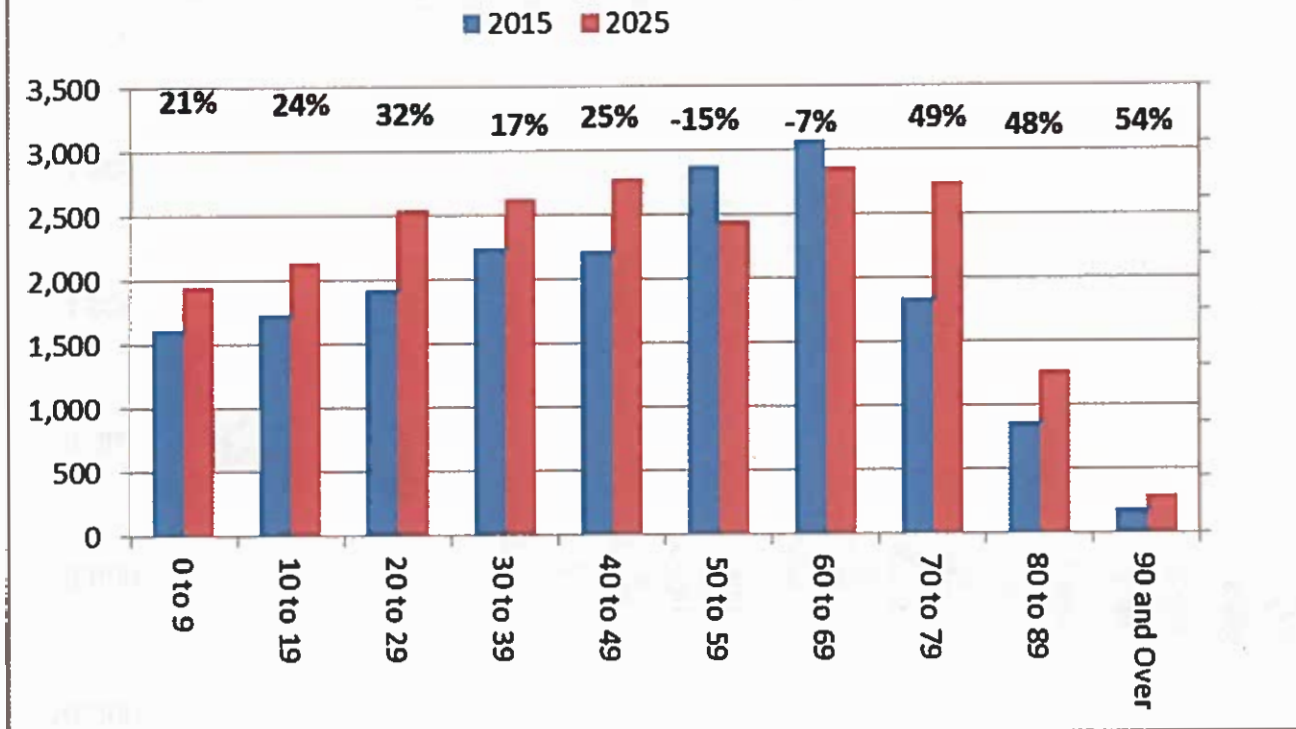
Enrollment – Current Conditions

Salida School District Comprehensive Master Plan - 2018



School Enrollments

Chaffee Forecast Growth by Age



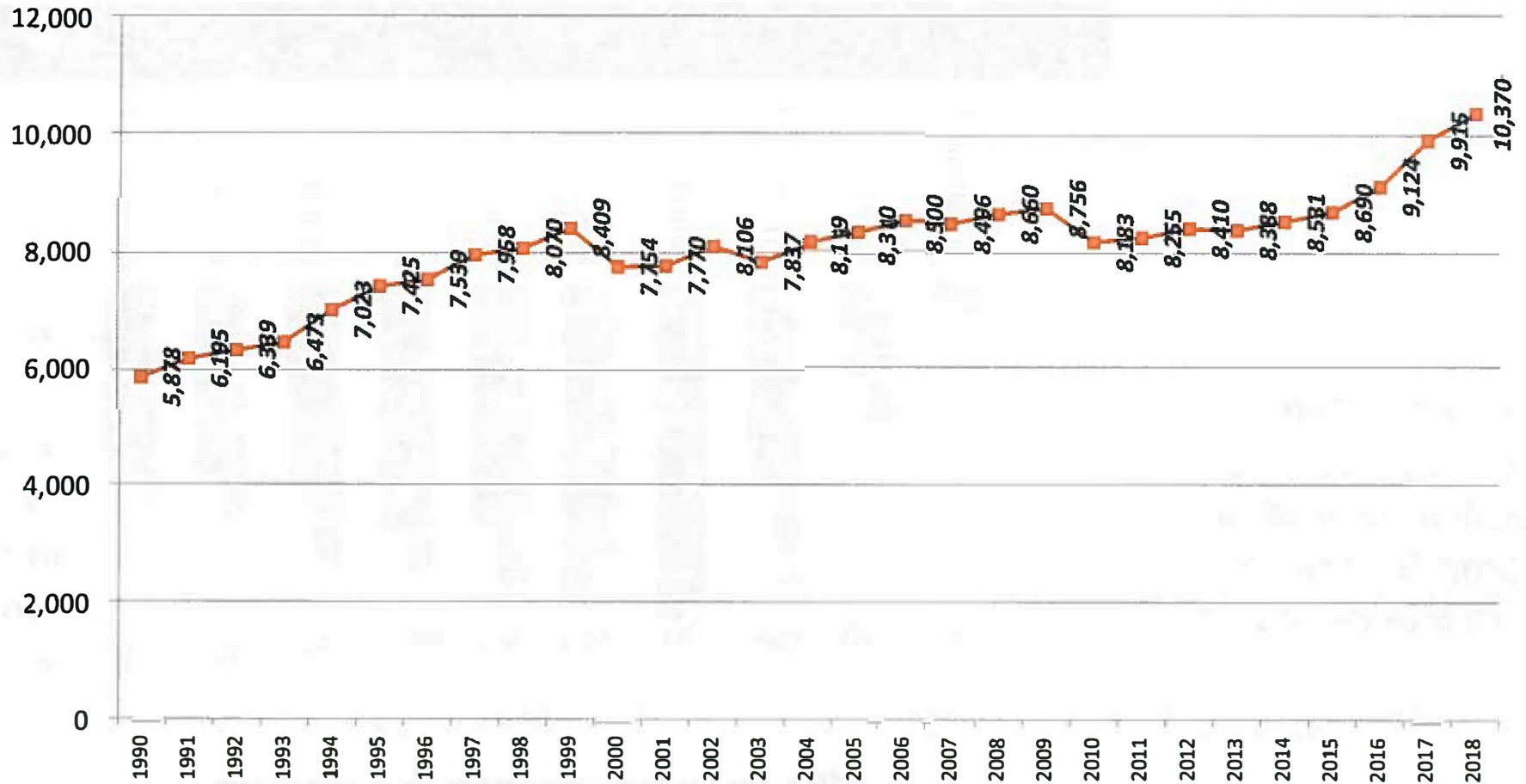
*State Demographer
Forecast by 2025 -
Approximately 500
Additional School-
aged Children*



COLORADO
Department of Local Affairs

State Demographer's Expectations

June Employed Persons - Chaffee County - 1990 - 2018 (Colo. Dept. Labor - LMI)



Job Growth – Employed Persons in the Month of June – 1990 - 2018

Chaffee County Building Permit Summary - 9/5/18 - Data as of End of August 2018

Dwelling Type	Salida					Buena Vista					Poncha Springs					Chaffee County					Total				
	2014	2015	2016	2017	YTD 2018 (August)	2014	2015	2016	2017	YTD 2018 (August)	2014	2015	2016	2017	YTD 2018 (August)	2014	2015	2016	2017	YTD 2018 (August)	2014	2015	2016	2017	YTD 2018 (August)
Accessory Dwelling Units		4			2					1						2			4		0	6	0	4	3
Condo	6		1																		6	0	1	0	0
Duplex	4	8	2						1			1									4	8	3	0	1
Mobile / Modular	1	6	6		1	6				1	1	1	2		14					5	22	7	6	2	7
Single Family	30	42	57	61	58	13	12	24	18	33	7	16	36	39	11	64	88	119	109	95	114	158	236	227	197
Townhouse	3	7	17		2							10	7					1			3	17	25	0	2
Triplex	3																				3	0	0	0	0
Total	47	67	83	61	63	19	12	24	18	36	8	27	44	41	11	78	90	120	113	100	152	196	271	233	210

- August YTD New Housing Counts are Robust and Continue the Growth Trends Evident During the Past Three Years.
- Salida School District Portion of Chaffee County is on a Robust New Unit Pace for 2018 (August YTD = 210); with Healthy Vacant Lot and Infrastructure Availability for Continued Growth

**Apartment Units are Counted as Commercial Properties*

Low Basis – Diminished Economy

- Decline of New Housing Units decline to half volume (125)
- 2+ Year Decline in Employment
- Significant National Recession
- Return to Large Single Family Homes as Predominant Dwelling Type
- Perception that School District is not Effectively addressing growth

Medium Basis – Current Trajectory

- Continued Pace of New Housing Unit Volume (250)
- Continuing Diversification of Housing Types
- Current, Producing Subdivisions Remain Active
- No Decline in Employment
- Continuing Stability in Overall Population, Birth Rate, and Continuing Departure from Front Range
- Perception the School District is Addressing Growth

High Basis – Accelerated Economy

- Accelerated Pace of New Housing Unit Volume (+300)
- Rapid development of:
 - Two Rivers Subdivision,
 - Vandaveer Area
 - the “County Parcel” in Poncha Springs
- Accelerating Diversification of Housing Types
- No Decline in Employment; Accelerated Job Growth
- Growth in Overall Population, Birth Rate, and Accelerated Departure from Front Range
- Perception of School District is Addressing Growth and Quality of Life

Influences impacting enrollment “pace”:

- Concern of a National Recession in 2020
(No Tangible Forecast Due to Prolonged Period Since the Last Recession)
- Limitation of Continued Higher Density Housing
(Concern About the Pace of Change and Perceived Impacts of Higher Density Housing)
- Historical Cost Escalation of Colorado Housing
(Could continue into the Affordable, Higher-density Categories)

Potential Downsides / Risk Factors

Forecast Influences:

- Demographics Indicate Strong Growth During the Next 5-8 Years
- Trends are Strong and Expected to Remain So for the Next 2-3 years
- Vacant Lot Inventory and Infrastructure (Water and Sewer) are Ample

Enrollment – Forecast

Salida School District Comprehensive Master Plan - 2018

Extended

43 years

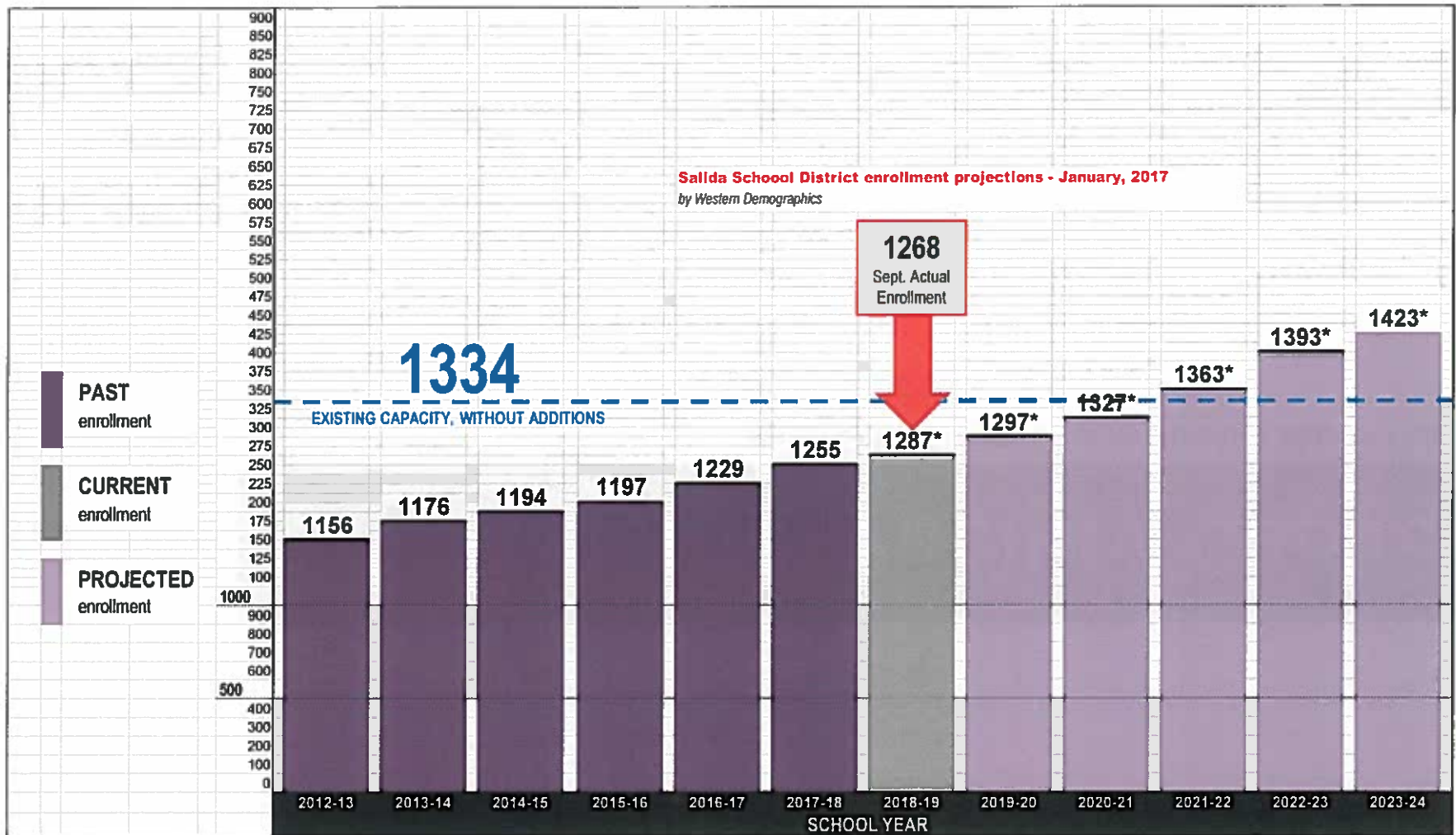
Projections:

Grade Level	2017-18	2022 (5-yr)			2027 (10-yr)			2032 (15-yr)			(2037) 20-yr			2060 (Build-out)		
	Enrollment	Low	Med	High	Low	Med	High	Low	Med	High	Low	Med	High	Low	Med	High
Lower School Level (K-4)	435	-1	21	85	49	96	145	99	171	245	149	246	345	379	591	805
Middle School Level (5-8)	372	35	52	68	44	80	116	84	140	196	124	200	276	308	476	644
Upper School Level (9-12)	389	34	65	45	40	86	122	66	132	188	106	192	268	290	468	636
totals	1196	68	138	198	133	262	383	249	443	629	379	638	889	977	1535	2085
avg. kids / year	26	14	28	40	13	26	38	17	30	42	19	32	44	23	36	48

Short Term Projections:

Grade Level	2017-18	2020 (3-yr)			2022 (5-yr)		
	Enrollment	Low	Med	High	Low	Med	High
Lower School Level (K-4)	435	-9	3	17	-1	21	85
Middle School Level (5-8)	372	38	51	61	35	52	68
Upper School Level (9-12)	389	-1	18	31	34	65	45
totals	1196	28	72	109	68	138	198
avg. kids / year	26	9	24	40	14	28	40

Salida School District is projected to double enrollment in 35 years.



School Enrollments

Existing Facility Capacity

Salida School District Comprehensive Master Plan - 2018